

N

MCCALL MFG. CO.

TO SAXON
8 Tiger

3+240
P-468

12470 V. LINE

4160 V. LINE

WATER LINE

PROPOSED 8" WATER LINE

1+49.8
H.F.

S11°17'W - 63.0'
REF DWG. NO. 406-22

DRIVE

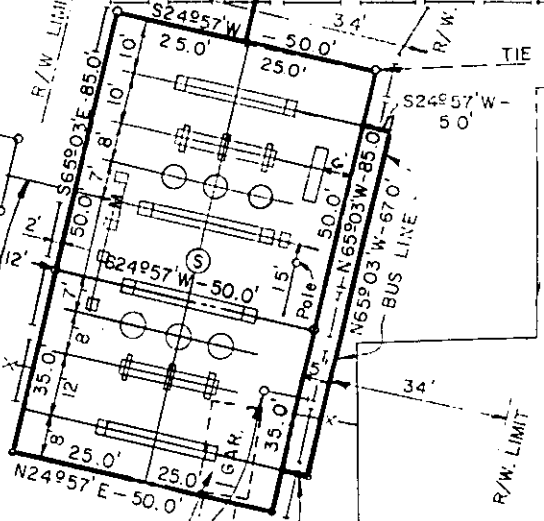
R. 2+72.3

16" RAW WATER LINE

TIE LINE

12470 V. LINE

S58°21'E - 248.3
4160 V. LINE



MCCALL MFG CO.

COMMISSION OF PUBLIC WORKS
PROPOSED SWITCHING STATION

TO CUSTOMER DELIVERY
STRUCTURE

R/W LIMIT

TO BE REMOVED

N24°57'E - 50.0'

CITY OF

HAZEL D. EDWARDS

CITY OF GREER
(RESERVOIR)

DUKE STREET

(Continued on next page)